

**CREATIVE FASTENERS LLP**

WE CAN MANUFACTURE & SUPPLY ANY COMPONENT AS PER THE CUSTOMERS DRAWING





## ABOUT COMPANY



Creative Fasteners Lp is a leading manufacturer, Importer , wholesaler of S.S Self Tapping Screws ,S.S Rivet Nut , S.S &G.I Self drilling Screws ,S.S Pop Rivets , S.S Hex Bolt , S.S Hex Nut , S.S Dome Nut , S.S Male Female Bolts ,S.S wedge & Mechanical Anchor Fasteners ,S.S Cage Nut , S.S Chemical Anchor , Precision Turned Parts on Automats, Full Threaded and Half Threaded Studs, Long Threaded Bars, Automotive Fasteners, Brass & M.S. Inserts for Plastic mouldings. The company is specialized in manufacture of stainless steel parts.

Besides above we can manufacture & supply any Component as per the customers drawing

To attain maximum customer satisfaction with its outstanding products & services has always been the trademark of the company and it strives hard to delight its customers by providing the same.

- Serving to various Industries
- Construction
- Appliances
- Water & Chemical Pump
- Automobile
- Valve
- Electrical & Electronics
- Industrial Plastic Moulding
- Defence





## TECHNICAL INFORMATION

**CREATIVE FASTENERS LLP** specializes in Stainless Steel Fasteners which are mainly used in 300 series. The standard Chemical Composition of this type of Stainless Steels 18% (Cr) and 8% (Ni) , it is popularly known as 18-8 Stainless Steel a kind of superior metal which confirms to environmental protection.

### STAINLESS STEEL IS BEST IN CORROSION RESISTANCE

On contact with oxygen , a chromium oxide layer is formed on the surface of the material . This passive Layer protects it & has the unique ability to repair itself.

### STAINLESS STEEL IS BEST IN FIRE RESISTANCE

The best fire resistance of all metallic material when used in structural Application , having a critical temperature above 800 C.

The Austenitic Stainless Steel can't be hardened by heat treatment , it needs to be done through cold work to enhance its hardness & strength.

The Austenitic Stainless Steel is non- magnetic under normal status but it will turn to be slightly magnetic after cold work or forging.

## CHEMICAL COMPOSITION

Alloy	C%	MN %	P%	S%	SI%	CR %	NI %	MO%
316	0.080	2.000	0.045	0.030	1.000	16 TO 18	10 TO 14	2 TO 3
304	0.080	2.000	0.045	0.030	1.000	18 TO 20	8 TO 10	





**C – CARBON, MN – MANGANESE, P – PHOSPHORUS, S – SULPHUR, SI – SILICON,  
CR – CHROMIUM, NI – NICKEL, MO – MOLYBDENUM**

**A2 – 70 means Austenitic Steel , minimum 700 N/MM2 TENSILE STRENGTH**

**A4 – 80 means Austenitic Steel , minimum 800 N/MM2 TENSILE STRENGTH**



**MECHANICAL PROPERTIES**

Compared to other materials , Stainless Steel has Strong mechanical properties at ambient temperatures. It combines ductility , elasticity and hardness , enabling it to be used in difficult metal forming modes. It offers good mechanical behaviour at both low & high temperatures .

**MECHANICAL PROPERTY REQUIREMENTS (ISO 3506)**

GROUP	GRADE OF FASTENERS	PROPERTY CLASS	TENSILE STRENGTH N/MM <sup>2</sup>	EXT AFTER FRACTURE (MIN)	PROOF LOAD STRESS N/MM <sup>2</sup>	GRADE OF MATERIAL
AUSTENITIC	A2 , A4	50	500	0.6d	500	AISI 304 , AISI 316
		70	700	0.4d	700	
		80	800	03d	800	

SIZE STANDARD PITCH	MINIMUM BREAKING TORQUE FOR PROPERTY CLASS			PROOF LOAD ON NUTS KG/MIN
	50 N- M	70 N- M	80 N- M	
M1 .6	0.15	0.20	0.27	-
M2	0.30	0.40	0.56	150.00
M2.5	0.60	0.90	1.20	242.86
M3	1.10	1.60	2.10	356.77
M4	2.70	3.80	4.90	627.93
M5	5.50	7.80	10.00	1013.25
M6	9.30	13.00	15.00	1434.25
M8	23.00	32.00	37.00	2611.62
M10	46.00	65.00	74.00	4138.63
M12	80.00	110.00	130.00	6015.29
M14	---	157.00	--	8214.28
M16	210.00	290.00	330.00	11202.85

- All Dimensions are for references only.  
- All Dimensions are in mm





# SELF TAPPING SCREWS



Pan Philip

Csk Philip

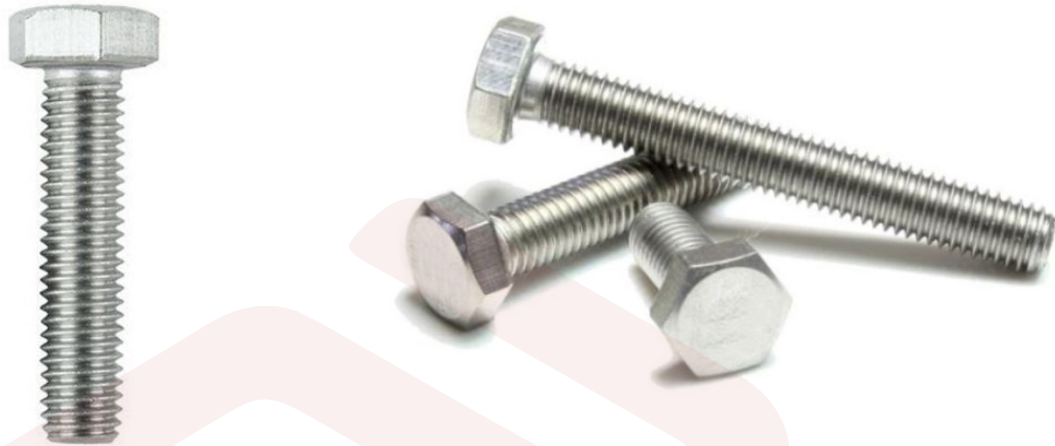
	NO.2	NO.4	NO.6	NO.8	NO.10	NO.12	NO.14	
DIA	2.2	2.9	3.5	4.2	4.8	5.5	6.3	
<b>PAN HEAD</b>							<b>DIN 7981</b>	
PITCH	0.8	1.1	1.3	1.4	1.6	1.8	1.8	
HEAD DIA	MAX	4.2	5.6	6.9	8.2	9.5	10.8	12.5
	MIN	3.9	5.3	6.54	7.84	9.14	10.37	12.07
HEAD DEPTH	MAX	1.8	2.2	2.6	3.05	3.55	3.95	4.55
	MIN	1.55	1.95	2.35	2.75	3.25	3.65	4.25
<b>CSK HEAD</b>							<b>DIN 7982</b>	
PITCH	0.8	1.1	1.3	1.4	1.6	1.8	1.8	
HEAD DIA	MAX	4.3	5.5	6.8	8.1	9.5	10.8	12.4
	MIN	4	5.2	6.44	7.74	9.14	10.37	11.97
HEAD DEPTH	1.3	1.7	2.1	2.5	3.00	3.40	3.80	
MAJOR DIA	2.1/2.4	2.76/2.9	3.35/3.53	4.09/4.22	4.62/4.85	5.28/5.46	6.03/6.25	
T.P.I.	32	24	20	18	16	14	14	

- All Dimensions are for references only.  
- All Dimensions are in mm





# HEXAGON HEAD BOLTS / SCREWS



METRIC								DIN 933	
SIZE	M3	M4	M5	M6	M8	M10	M12	M14	M16
ACROSS FLAT	5.50	7.00	8.00	10.00	13.00	16.00	18.00	22.00	24.00
HEAD THICKNESS	2.00	2.80	3.50	4.00	5.30	6.04	7.50	9.00	10.00
WASHER DIA	4.60	5.90	6.90	8.90	11.60	14.60	16.60	19.80	22.50
MAJOR DIA MAX	--	--	--	5.974	7.972	9.968	11.966	13.962	15.962
MAJOR DIA MIN	--	--	--	5.794	7.760	9.732	11.701	13.682	15.682
PITCH	0.50	0.70	0.80	1.00	1.25	1.50	1.75	2.00	2.00

- All Dimensions are for references only.  
- All Dimensions are in mm

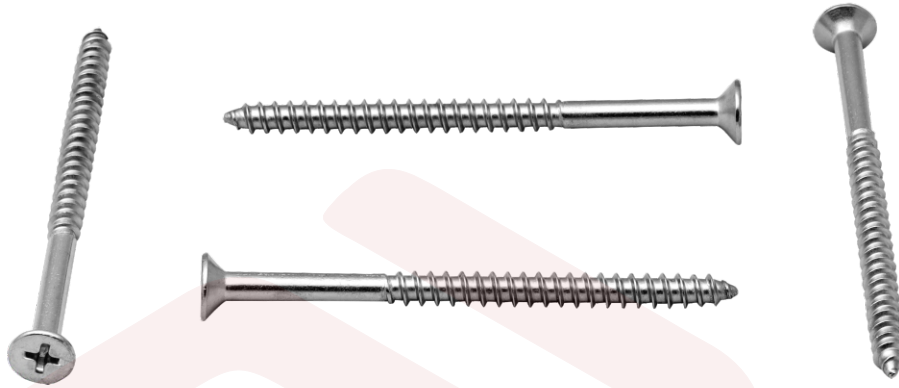


OFFICE : 35 , bldg. NO.1 , New Sonal Link Est , Link Road , Opp Sai Palace Hotel , Malad West , Mumbai 64.

FACTORY : Gala No.16 , Real Industrial Est NO.6 , Survey No.84B , 84C , 84D , Village Waliv , Vasai East – 401208.



**WOOD SCREW**



	NO.2	NO.3	NO.4	NO.6	NO.8	NO.9	NO.10	NO.12	NO.14
<b>COUNTERSUNK HEAD ( FLAT )</b>									
	<b>DIN 7997</b>								
	2	2.5	3	3.5	4	4.5	5	5.5	6
<b>HEAD DIA</b>	3.8	4.7	5.6	6.5	7.5	8.3	9.2	10.2	11
<b>COUNTER DEGREE</b>	90								
<b>MAJOR DIA</b>	1.6/2.0	2.1/2.5	2.6/3.0	3.02/3.5	3.52/4.0	4.02/4.5	4.52/5.0	5.02/5.0	5.52/6.0
<b>T.P.I</b>	25.5-26	21-25	17-21	15-18	13-15.5	12-14	10.5-13	10-11.5	9-10.5

- All Dimensions are for references only.  
- All Dimensions are in mm





# HEXAGON HEAD NUT



METRIC											DIN 934
SIZE	M1.6	M2	M2.5	M3	M4	M5	M6	M8	M10	M12	M16
ACROSS FLAT	3.20	4.00	5.00	5.44	6.92	7.92	9.89	12.86	15.86	17.86	23.84
THICKNESS	1.30	1.60	2.00	2.40	3.20	4.50	5.00	6.50	8.00	10.00	14.00
MAJOR DIA MAX	--	--	--	3.00	4.00	5.00	6.00	8.00	10.00	12.00	--
MAJOR DIA MIN	--	--	--	2.599	3.422	4.334	5.513	6.912	8.676	10.441	--
PITCH	0.35	0.40	0.45	0.50	0.70	0.80	1.00	1.25	1.50	1.75	2.00

- All Dimensions are for references only.  
- All Dimensions are in mm



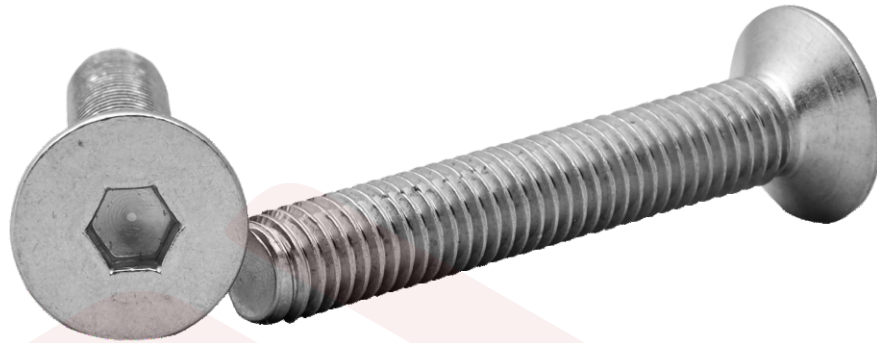
OFFICE : 35 , bldg. NO.1 , New Sonal Link Est , Link Road , Opp Sai Palace Hotel , Malad West , Mumbai 64.

FACTORY : Gala No.16 , Real Industrial Est NO.6 , Survey No.84B , 84C , 84D , Village Waliv , Vasai East – 401208.





# ALLEN CSK SCREWS



DIA	M3	M4	M5	M6	M8	M10	M12
<b>CSK SOCKET HEAD SCREW</b>						<b>DIN 7991</b>	
HEAD DIA	6	8	10	12	16	20	24
SOCKET SIZE	2	2.5	3	4	5	6	8
SOCKET DEPTH	1.2	1.8	2.3	2.5	3.5	4.4	4.6
MIN THREAD LENGTH	12	14	16	18	22	26	30
FULLTHREAD LENGTH	20	25	30	35	40	40	50
<b>PITCH</b>	<b>0.5</b>	<b>0.7</b>	<b>0.8</b>	<b>1.0</b>	<b>1.2</b>	<b>1.5</b>	<b>1.75</b>

- All Dimensions are for references only.  
- All Dimensions are in mm

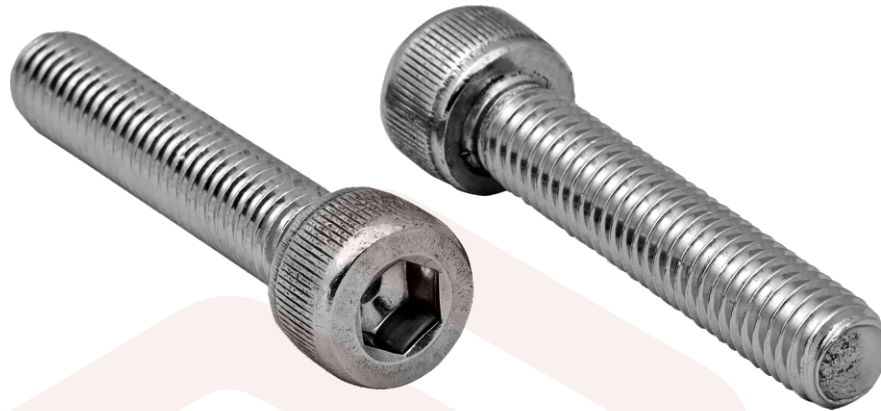


OFFICE : 35 , bldg. NO.1 , New Sonal Link Est , Link Road , Opp Sai Palace Hotel , Malad West , Mumbai 64.

FACTORY : Gala No.16 , Real Industrial Est NO.6 , Survey No.84B , 84C , 84D , Village Waliv , Vasai East – 401208.



# ALLEN CAP SCREWS



DIA	M3	M4	M5	M6	M8	M10	M12
<b>SOCKET HEAD CAP SCREW</b>						<b>DIN 912</b>	
HEAD DIA	5.5	7	8.5	10	13	16	18
HEAD DEPTH	3	4	5	6	8	10	12
SOCKET SIZE(A/F)	2.5	3	4	5	6	8	10
SOCKET DEPTH	1.3	2	2.7	3.3	4.3	5.5	6.6
MIN THREAD LENGTH HALF	18/12	20/14	22/16	24/18	28/22	32/26	36/30
<b>FULL THREAD LENGTH</b>	<b>20/16</b>	<b>25/20</b>	<b>25/25</b>	<b>30/25</b>	<b>35/30</b>	<b>40/35</b>	<b>45/40</b>

- All Dimensions are for references only.  
- All Dimensions are in mm



OFFICE : 35 , bldg. NO.1 , New Sonal Link Est , Link Road , Opp Sai Palace Hotel , Malad West , Mumbai 64.

FACTORY : Gala No.16 , Real Industrial Est NO.6 , Survey No.84B , 84C , 84D , Village Waliv , Vasai East – 401208.



## Male Female Screw

### SPECIFICATION

- Application Hardware
- Material S.S. 304 , 316 Grade
- Dia M5 TO M30
- As Per Drawing



## Allen Grub

### SPECIFICATION

- Material S.S 304 , 316 Grade
- DIN 913 Socket Set Screw with Flat Point
- DIN 914 Socket Set Screw with Cone Point
- DIN 915 Socket Set Screw With Dog Point
- DIN 916 Socket Set Screw with Cup Point
- Dia M3 TO M16





## STUD BOLT



**DIN 976**

<b>Thread Size</b>	<b>M2</b>	<b>M2.5</b>	<b>M3</b>	<b>M4</b>	<b>M5</b>	<b>M6</b>
<b>Pitch</b>	<b>0.4</b>	<b>0.45</b>	<b>0.5</b>	<b>0.7</b>	<b>0.8</b>	<b>1.0</b>

<b>Thread Size</b>	<b>M8</b>	<b>M10</b>	<b>M12</b>	<b>M16</b>	<b>M20</b>	<b>M24</b>
<b>Pitch</b>	<b>1.25</b>	<b>1.50</b>	<b>1.75</b>	<b>2.0</b>	<b>2.5</b>	<b>3.0</b>

- All Dimensions are for references only.
- All Dimensions are in mm

## Dome Nut



### SPECIFICATION

- Application Hardware
- Material S.S 304 , 316 Grade
- Dia M4 TO M16 ( DIN 1587)
- As Per Drawing also we can make





# Mushroom Head Bolt



DIN 603						
Thread Size	d	M5	M6	M8	M10	M12
Pitch		0.8	1.0	1.25	1.50	1.75
h (head)	Max	13.55	16.55	20.65	24.65	30.65
	Min	12.45	15.45	19.35	23.35	29.35
f (neck)	Max	4.1	4.6	5.6	6.6	8.75
	Min	2.9	3.4	4.4	5.4	7.25
k	Max	3.3	3.88	4.88	5.38	6.95
	Min	2.7	3.12	4.12	4.62	6.05
q	Max	5.48	6.48	8.58	10.58	12.7
	Min	4.52	5.52	7.42	9.42	11.3

- All Dimensions are for references only.  
- All Dimensions are in mm





## Insert Nut, Rivet Nut



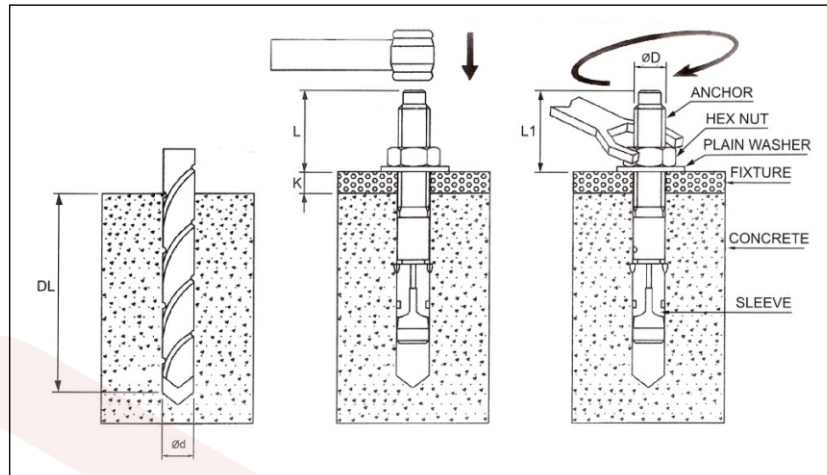
<b>DIA</b>	<b>Inner Dia (mm) ID</b>	<b>Outer Dia (mm) OD</b>	<b>Length (mm)</b>
<b>M3</b>	<b>3 mm</b>	<b>5 mm</b>	<b>9 mm</b>
<b>M4</b>	<b>4 mm</b>	<b>6 mm</b>	<b>11 mm</b>
<b>M5</b>	<b>5 mm</b>	<b>7 mm</b>	<b>12 mm</b>
<b>M6</b>	<b>6 mm</b>	<b>9 mm</b>	<b>15 mm</b>
<b>M8</b>	<b>8 mm</b>	<b>11 mm</b>	<b>18 mm</b>
<b>M10</b>	<b>10 mm</b>	<b>13 mm</b>	<b>21 mm</b>
<b>M12</b>	<b>12 mm</b>	<b>15 mm</b>	<b>22 mm</b>

- All Dimensions are for references only.  
- All Dimensions are in mm





# Anchor fasteners



## Technical Specification for Single Sleeve Anchor Bolt

ANCHOR SIZE d (mm)	ANCHOR LENGTH d (mm)	HOLE DEPTH DL (mm) (APPROX.)	HOLE DIA d (mm)	BEFORE TIGHTENING L (mm) (MIN)	AFTER TIGHTENING L (mm)	FIXTURE THICKNESS K (mm)	SPANNER SIZE
M6	60 TO 100	50 TO 80	∅6	9	11	2 TO 20	10
M8	70 TO 120	60 TO 100	∅8	12	14.5	3 TO 25	13
M10	70 TO 130	60 TO 110	∅10	15	18	4 TO 30	17
M12	80 TO 200	70 TO 170	∅12	18	21.5	5 TO 40	19
M16	90 TO 200	70 TO 170	∅16	24	28	5 TO 60	24
M20	120 TO 200	100 TO 170	∅20	30	35	8 TO 70	30

ANCHOR SIZE D (mm)	TIGHTENING TORQUE (N-M)	SHEARING LOAD Kgf (MIN.)	PULL OUT LOAD Kgf (MIN.)	BREAKING TORQUE N-M (MIN.)
M6	6 TO 10	450	330	15
M8	14 TO 25	600	550	28
M10	20 TO 45	720	800	65
M12	40 TO 60	1250	1150	120
M16	50 TO 125	1650	1600	180
M20	140 TO 240	2560	2200	300

- All Dimensions are for references only.  
- All Dimensions are in mm

- NOTE:**
- 1) MINIMUM ANCHOR INSERT DEPTH = ANCHOR LENGTH - (1.5 D + FIXTURE THICKNESS)
  - 2) FIXTURE THICKNESS DEPENDS UPON THE TYPE OF APPLICATION OR CUSTOMER USABILITY
  - 3) PULL OUT LOAD DEPENDS UPON THE CONCRETE MIXTURE RATIO (CONCRETE GRADE)



OFFICE : 35 , bldg. NO.1 , New Sonal Link Est , Link Road , Opp Sai Palace Hotel , Malad West , Mumbai 64.

FACTORY : Gala No.16 , Real Industrial Est NO.6 , Survey No.84B , 84C , 84D , Village Waliv , Vasai East – 401208.



## Our Products



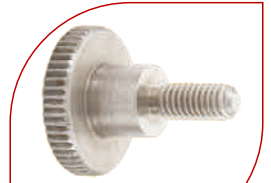
**DIN 7**



**DIN 427**



**DIN 431**



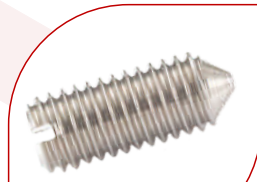
**DIN 464**



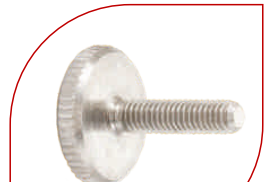
**DIN 467**



**DIN 551**



**DIN 553**



**DIN 653**



**DIN 705**



**DIN 908**



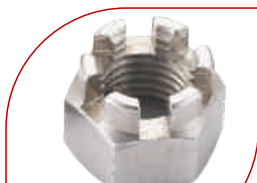
**DIN 910**



**DIN 921**



**DIN 923**



**DIN 935**



**DIN 937**



**DIN 939**



**DIN 1587**



**DIN 6334**



**CUP WASHER**



**BREAK OFF NUT**







DIN	DESCRIPTION
7	Parallel Pin
417	Slotted Grub Screw with Full Dog Point
427	Slotted Set Screw
431	Pipe Nut/ Lock Nut
438	Slotted Set Screw with Full Dog Point
464	Knurled Thumb Screw
466	Knurled Thumb Nut
467	Knurled Thumb Nut Thin
546	Slotted Round Nut
551	Slotted Set Screw with Flat Point
553	Slotted Set Screw with Cone Point
653	Knurled Thin Thumb Screw
705	Adjustable Shaft Rings/ Collar
908	Hexagonal Socket Screw Plug
910	Hexagonal Head Screw Plug with Shoulder
920	Slotted Pan Head Screw
921	Slotted Pan Head Screw with Large Head
923	Slotted Pan Head Screw with Shoulder
935	Hexagon Castle Nut Thin Type
937	Hexagon Castle Nut
938	Studs Half Threaded - 1d
939	Studs Half Threaded - 1.25d
976	Threaded Rod
1587	Hexagon Dome Nut
6319	Conical Seats / Conical Washer
6330	Hexagon Nut 1.5d
6331	Hexagon Nut 1.5d with Collar
6334	Coupler Nut/ Hexagon Long Nut
7379	Shoulder Bolt
NF-E-27-619	Conical Washer / Cup Washer
	Break Off Nut / Shear Off Nut

